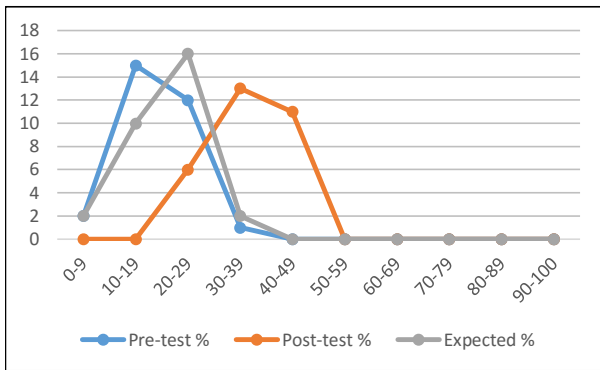
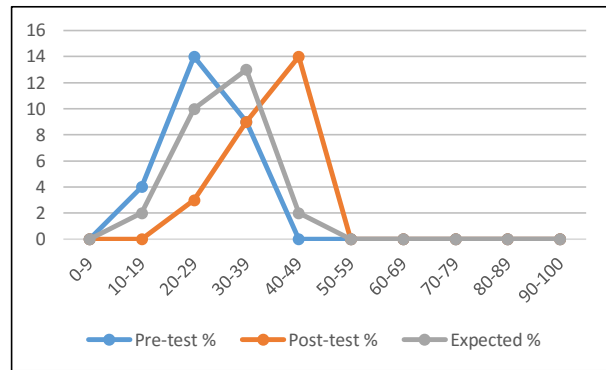


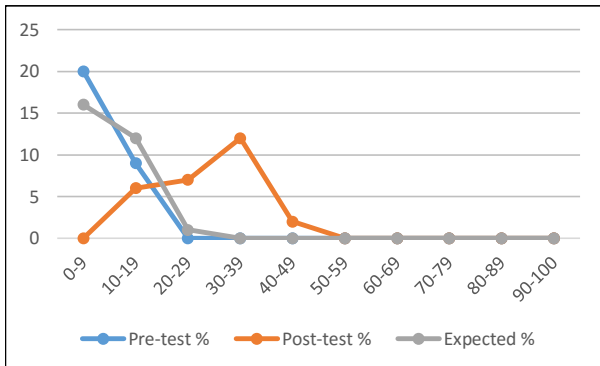
Graphs based on data received from one school based on Pre and Post-tests.



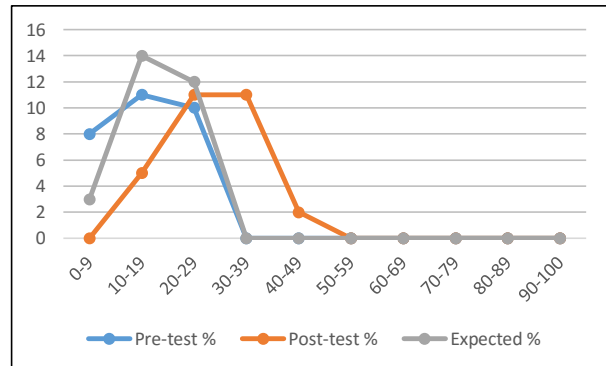
Year 3 Forces (Class 1)



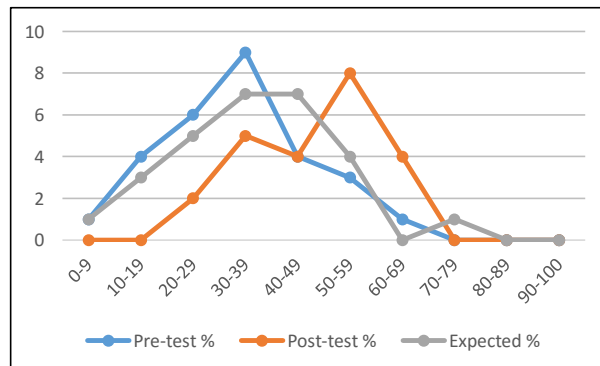
Year 4 Forces (Class 1)



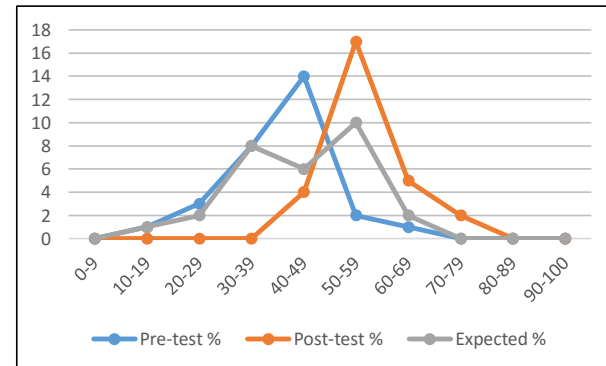
Year 3 Forces (Class 2)



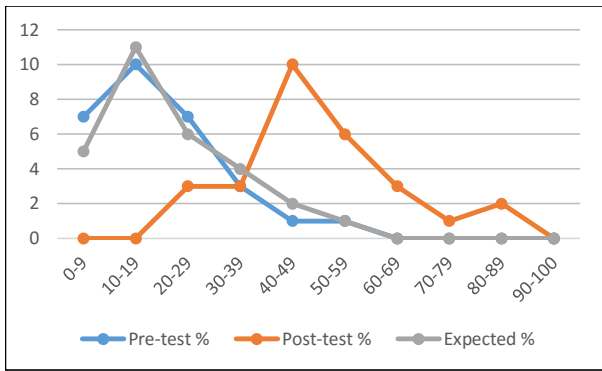
Year 4 Forces (Class 2)



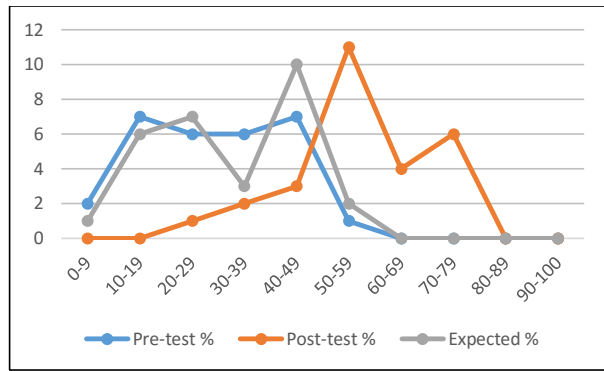
Year 3 Particle Theory (Class 1)



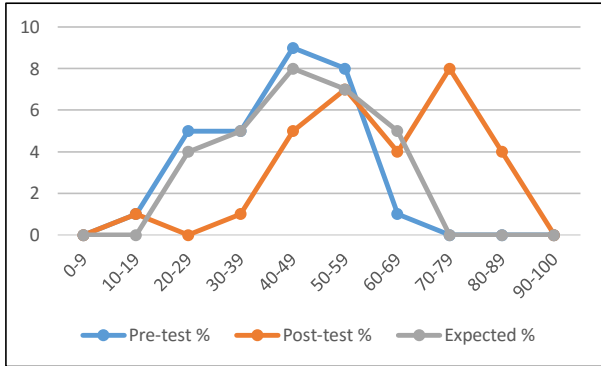
Year 4 Particle Theory (Class 1)



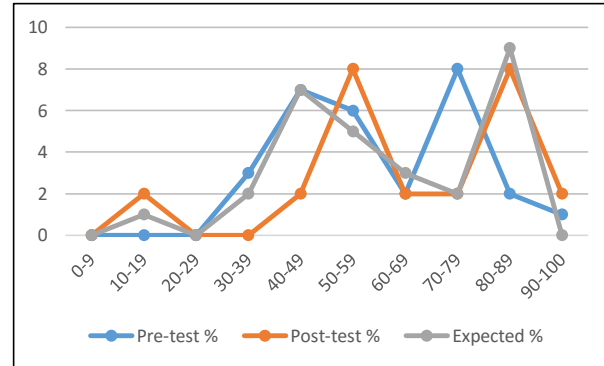
Year 3 Particle Theory (Class 2)



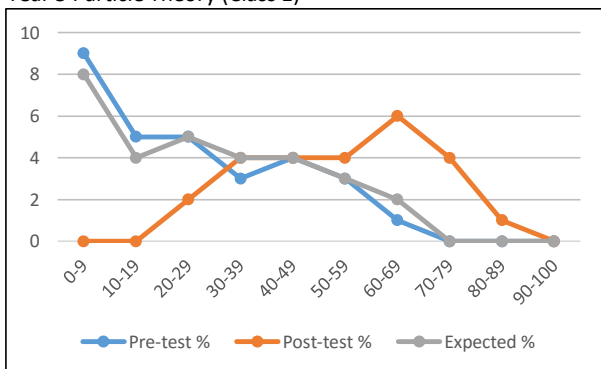
Year 4 Particle Theory (Class 2)



Year 5 Particle Theory (Class 1)



Year 6 Particle Theory (? Class)



Year 5 Particle Theory (Class 2)

Using Empiribox Pre- and Post-test based on SATs questions. The graph maps out the percentage score for both tests and an estimated expected percentage improvement.

The shift horizontally shows the improvement expected (grey) and achieved (red) after one term.

This picture is replicated in all schools who have conducted the pre- and post-tests.